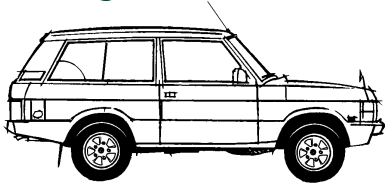
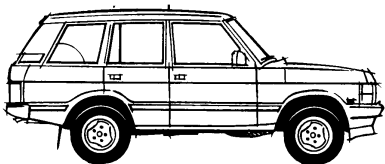


Identifying Your Land Rover

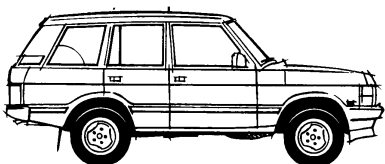
Range Rover



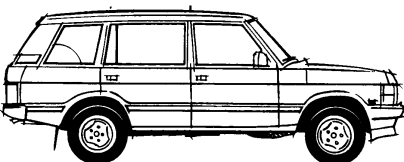
1970-1979
Range Rover Classic 2-Door, R.o.W.



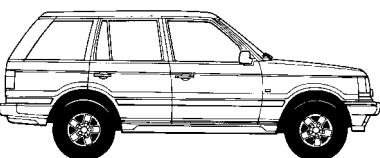
1980-1986
Range Rover Classic 4-Door with vertical metal grille, R.o.W.



1987-1994
Range Rover Classic 4-Door with horizontal plastic grille, NAS

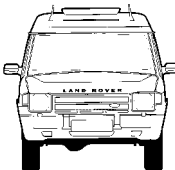
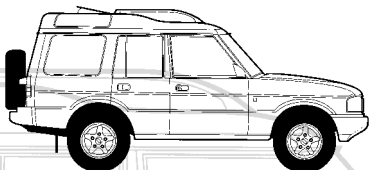


1993-1995
Range Rover Classic LWB, 4-Door with horizontal plastic grille, NAS

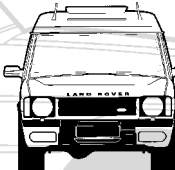


1996-2002
Range Rover 38A 4.0/4.6, NAS

Discovery



1994 - 1999
Discovery Series I



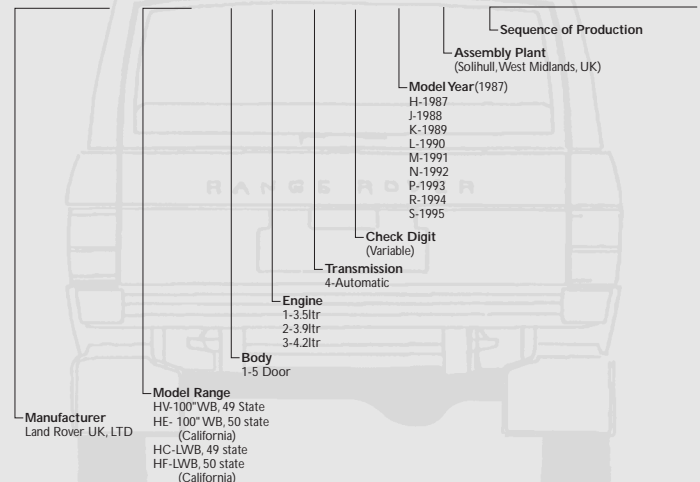
1999 to present
Discovery Series II

Capacities

	U.S. Unit	Liters	Type
Engine oil w/filter, 8-cylinder	7.1 quarts	6.66	10w/40
Main gearbox 8 cyl. 5sp LT77S	2.3 quarts	2.2	ATF Dexron III
Main gearbox 8 cyl 5sp R380	2.8 quarts	2.7	ATF Dexron III
Main gearbox 8 cyl 4sp ZF auto	10.0 quarts	9.1	ATF Dexron III
Transfer box 8 cylinder LT230	2.4 quarts	2.3	80w/90
Transfer box 8 cylinder Borg Warner	2.2 quarts	2.1	ATF Dexron III
Rear differential	1.8 quarts	1.75	80w/90
Front differential	1.8 quarts	1.75	80w/90
Swivel pin housing oil (each)	1.2 pints	0.5	80w/90
Swivel pin housing grease type	-	375 ml	Molyblendum
Power steering, 8 cylinder	3.0 quarts	2.9	ATF Dexron III
Fuel tank, Range Rover Classic	23.4 gallons	88.5	Unleaded - Premium
Fuel tank, Range Rover Classic LWB	23.4 gallons	88.5	Unleaded - Premium
Fuel tank, Discovery I	23.4 gallons	88.5	Unleaded - Premium
Cooling system, 8 cylinder	13.6 quarts	12.8	Ethylene- Glycol/water mix

RANGE ROVER CLASSIC VEHICLE IDENTIFICATION NUMBER (VIN) INTERPRETATION NORTH AMERICAN SPECIFICATION (NAS)

S A L H V 1 1 4 X H A 2 6 5 4 0 6



DISCOVERY - STATION WAGON 5 D00R VEHICLE IDENTIFICATION NUMBER (VIN) INTERPRETATION NORTH AMERICAN SPECIFICATION (NAS)

VIN Code	Engine	Gearbox	Steering
SALY128*RA**	3.9 Petrol EFI	Manual	LH STG
SALY124*RA**	3.9 Petrol EFI	Automatic	LH STG
SALY128*SA**	3.9 Petrol EFI	Manual	LH STG
SALY124*SA**	3.9 Petrol EFI	Automatic	LH STG
SALY128*TA**	4.0 Petrol EFI	Manual	LH STG
SALY124*TA**	4.0 Petrol EFI	Automatic	LH STG
SALY128*VA**	4.0 Petrol EFI	Manual	LH STG
SALY124*VA**	4.0 Petrol EFI	Automatic	LH STG
SALY124*WA**	4.0 Petrol EFI	Automatic	LH STG
SALY124*XA**	4.0 Petrol EFI	Automatic	LH STG

RA = 94 MODEL YEAR
SA = 95 MODEL YEAR
TA = 96 MODEL YEAR
VA = 97 MODEL YEAR
WA = 98 MODEL YEAR
XA = 99 MODEL YEAR

GEARBOX MANUAL 5 SPEED-R380
53A00001

GEARBOX-AUTOMATIC
ZF-4 Speed NO PREFIX

ENGINES-V8 PETROL EFI
35D00001 3.9 EFI 9.35.1 C/R (Manual)
36D00001 3.9 EFI 9.35.1 C/R (Auto)
50D00001 4.0 EFI 9.35.1 C/R (Auto)

TRANSFER GEARBOX-LT230T Type
28D00001

AXLES ASBESTOS FREE BRAKES
FRONT-71L00000A
REAR-47S00000A

for fast service 800 403-7591



802 879-0032



FAX 24 Hours (802) 879-9152 • www.roversnorth.com • Hours: Mon-Fri 8:00-5:30; Sat 8:30-12:30 EST