

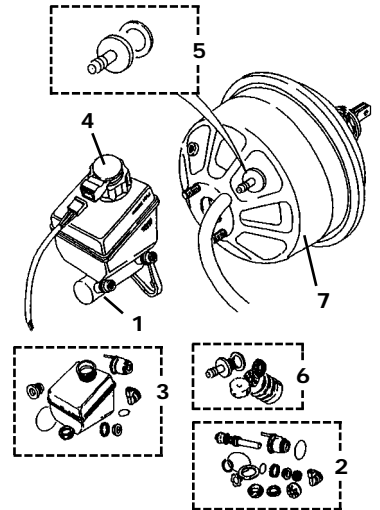
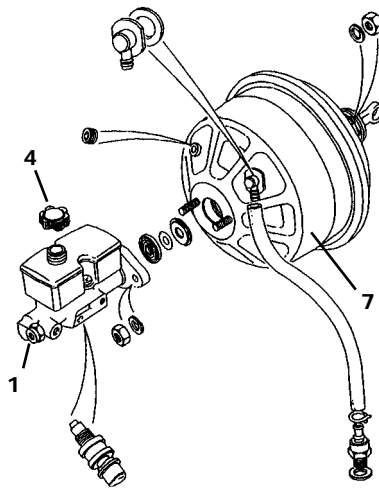
Brakes - Range Rover

Range Rover Classic Brakes

Range Rover Classic - Master Cylinder



- | | | | |
|----|--------|---------------------------------------|----------|
| 1. | RNB180 | Master Cylinder (Girling) | \$329.00 |
| | RNB172 | Master Cylinder (Lockheed) | \$209.00 |
| 2. | RNB174 | Master Cylinder Repair Kit (Girling) | \$129.00 |
| | RNB175 | Master Cylinder Repair Kit (Lockheed) | \$ 47.75 |
| 3. | RNB185 | Reservoir Repair Kit (Girling) | \$ 78.25 |
| 4. | RNB193 | Reservoir Cap (Girling) | \$ 45.25 |
| | RNB194 | Reservoir Cap (Lockheed) | \$ 1.70 |
| 5. | RNB173 | Non-Return Valve (Girling) | \$ 20.25 |
| | RNB207 | Non-Return Valve (Lockheed) | \$ 16.30 |
| | RNB211 | Seal for Lockheed Non-Return Valve | \$ 3.55 |
| 6. | RNB209 | Servo Repair Kit (Girling) | \$ 33.50 |
| | RNB210 | Servo Repair Kit (Lockheed) | \$142.25 |
| 7. | RNB190 | Servo Assembly (Girling) | \$479.00 |
| | RNB203 | Servo Assembly (Lockheed) | \$519.00 |



Range Rover Classic & 38A - Front Brakes

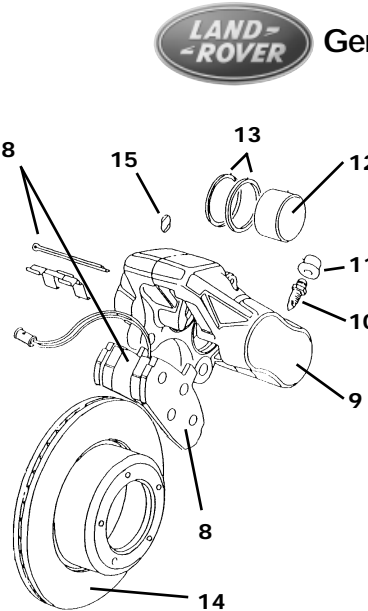
- | | | | |
|-----|--------|--|-------------|
| 8. | RNB001 | Front axle set brake pads, non ABS | \$ 59.00 |
| | RNB002 | Front axle set brake pads, ABS & Hunter | \$ 59.75 |
| | RND019 | Front axle set brake pads, 38A | \$129.00 |
| 9. | RNB014 | Front caliper assembly, non ABS | RH \$349.00 |
| | RNB015 | Front caliper assembly, non ABS | LH \$349.00 |
| | RNB011 | Front caliper assembly, ABS & Hunter | RH \$279.00 |
| | RNB017 | Front caliper assembly, ABS & Hunter | LH \$279.00 |
| 10. | RNB023 | Bleeder for all calipers | \$ 2.85 |
| 11. | RNB013 | Cap for bleeder | \$.75 |
| 12. | RNB024 | Piston all models, front | \$ 19.50 |
| 13. | RNB016 | Seal kit for all front calipers (2 required) | \$ 16.15 |
| 14. | RNB006 | Front brake disc, non ABS | \$ 79.95 |
| | RNB022 | Front brake disc, ABS and Hunter | \$ 69.00 |
| | RND028 | Front brake disc, 38A | \$ 78.25 |
| 15. | RNB020 | Seal for caliper all models, front | \$ 3.50 |

Range Rover Classic - Lockheed Master Cylinder up to 1987

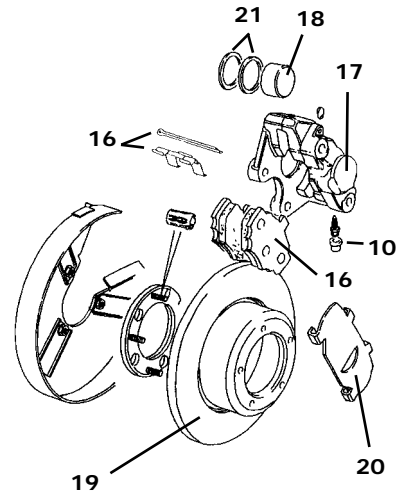
Range Rover Classic - Girling Master Cylinder From 1988 -1991

Range Rover Classic & 38A - Rear Brakes

- | | | | |
|-----|--------|---|-------------|
| 16. | RNB004 | Rear axle set brake pads, non ABS RH sensor | \$ 50.50 |
| | RNB005 | Rear axle set brake pads, non ABS LH sensor | \$ 50.50 |
| | RNB003 | Rear axle set brake pads, ABS & Hunter | \$ 54.00 |
| | RND020 | Rear axle set brake pads, 38A | \$105.00 |
| 17. | RNB018 | Rear caliper assembly, all models | RH \$269.00 |
| | RNB010 | Rear caliper assembly, all models | LH \$269.00 |
| 18. | RNB009 | Rear piston all models | \$ 19.75 |
| 19. | RNB012 | Rear brake disc, all Classic models | \$ 79.95 |
| | RND024 | Rear brake disc, 38A | \$ 75.00 |
| 20. | RNB007 | Shim for rear pads all models, outer | RH \$ 2.50 |
| | RNB008 | Shim for rear pads all models, outer | LH \$ 2.50 |
| 21. | RNB021 | Seal for caliper all models, rear | \$.90 |
| | RNB016 | Seal kit for all rear calipers (1 required) | \$ 16.15 |



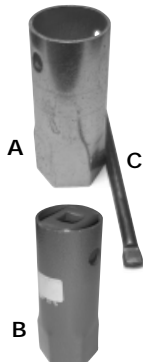
Range Rover Classic - Front Brakes



Range Rover Classic - Rear Brakes

Hubnut Socket Tools

- A) The right tool for removing and refitting the hub bearing lock nuts.
RNF406 \$15.00
- B) Same tool as above but with 1" drive socket attachment. Made in the UK.
RNF405 \$29.50
- C) Steel bar for tools A,B
RNT0004 \$5.75



Genuine Brake Kits

To ensure no squeal, no fade stopping in all conditions, fit only Land Rover Genuine Brake Parts. Safety First! Kits Include: 2 Brake discs, brake pads and hardware.

Range Rover Classic

- | | | |
|---------|-------------------------------|-----------|
| RNK6101 | Front Brakes w/o ABS | \$ 218.00 |
| RNK6102 | Rear Brakes w/o ABS LH Sensor | \$ 210.00 |
| RNK6103 | Rear Brakes w/o ABS RH Sensor | \$ 210.00 |
| RNK6104 | Front Brakes w/ABS | \$ 197.00 |
| RNK6105 | Rear Brakes w/ABS | \$ 213.00 |

Discovery I

- | | | |
|---------|--------------|-----------|
| RNK6106 | Front Brakes | \$ 237.00 |
| RNK6107 | Rear Brakes | \$ 207.00 |



RNK6104 Shown



Genuine Parts Support